

# CERTIFICATE OF LOCATION OF GOVERNMENT CORNER

County of Anoka

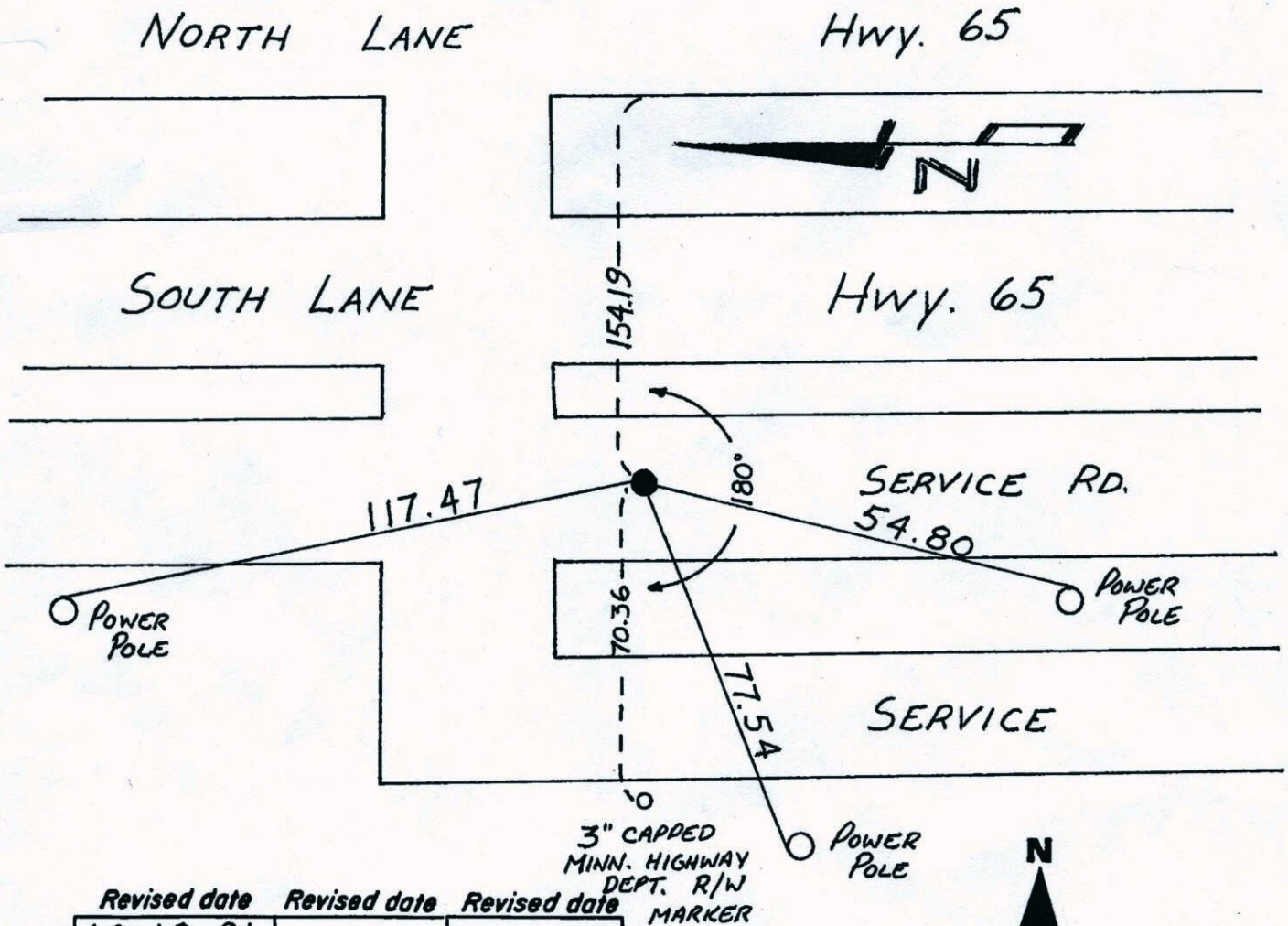
State of Minnesota

CENTER Corner of Sec. 5 Township 32 Range 23

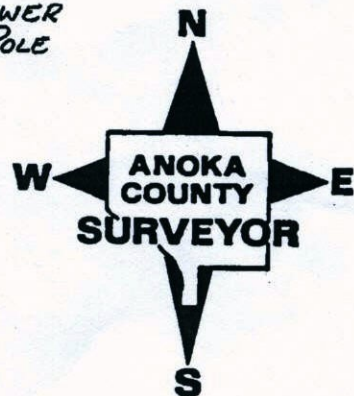
I hereby certify that on the 18 day of JULY, 1966, I found the described corner which was evidenced by 1/2" IRON PIPE

and I further certify that to perpetuate the location of said corner, I did, at the exact location thereof, place a permanent marker consisting of CAST IRON MON.

which reference or witness monuments are located in the manner following:

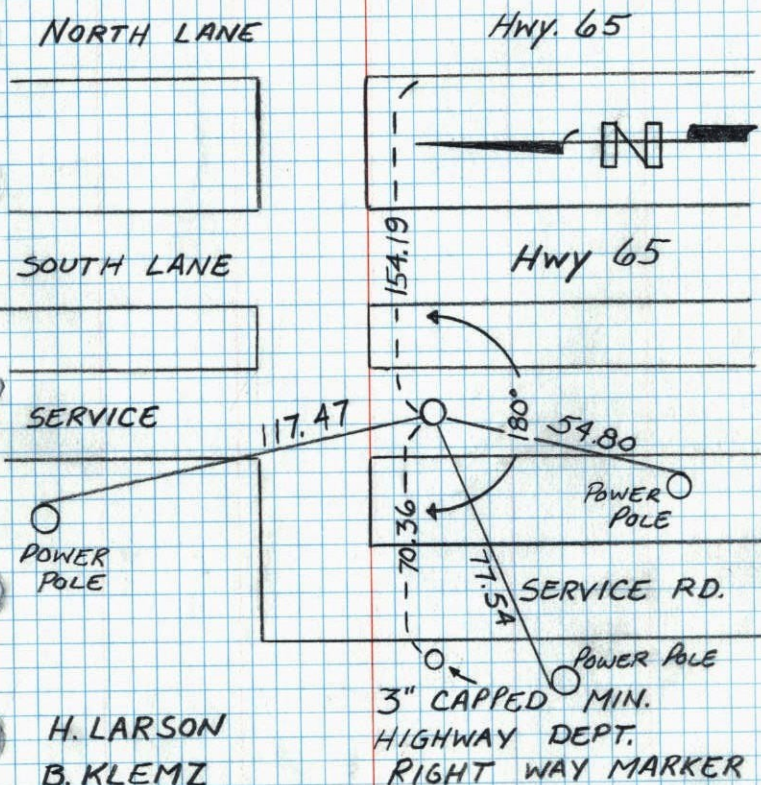


Revised date	Revised date	Revised date
10-18-91		
7-12-92		
8-15-96		





CTR. S. 5 T. 32 R. 23  
RETIE CAST IRON

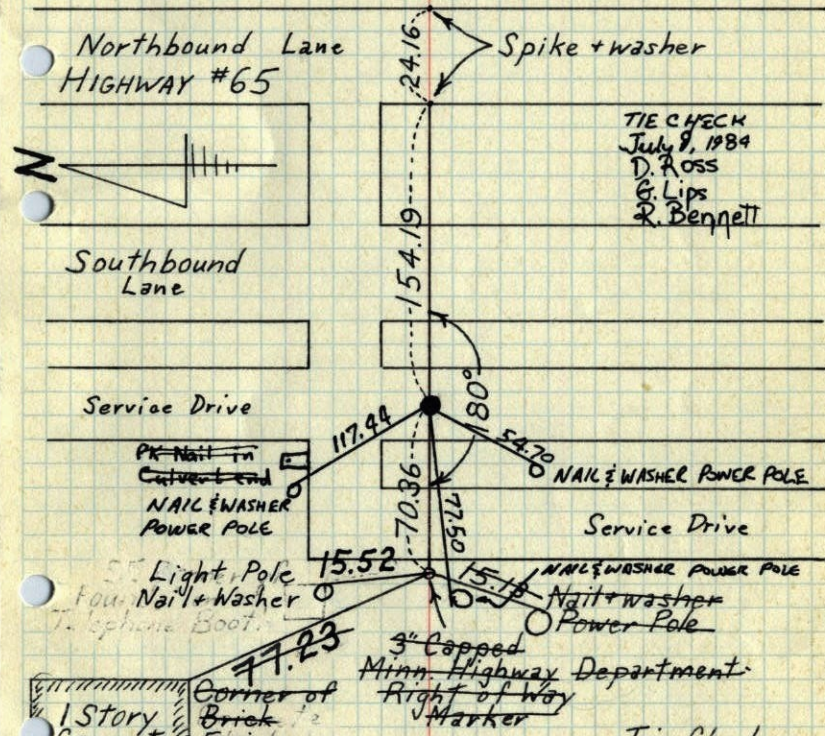


H. LARSON  
B. KLEMZ  
M. STEWART  
10-18-91

3" CAPPED MIN.  
HIGHWAY DEPT.  
RIGHT WAY MARKER

Center Sec. 5-T32-R23

~~1/2" pinched iron pipe over top center of~~  
Granite Monument down 1.2'±  
Set Cast Iron Monument flush on top of Granite.  
PK's 2.00' North + East. Sept. 10, 1969



1 Story  
Concrete  
Block  
Garage

Corner of  
Brick  
Facing

Tie check June 15, 71  
TIE CHECK 7-20-91  
P. ROSS  
P. MORNEY  
G. NEFFINGER

Tie check  
B. Brain  
J. Brocher  
B. Olson

Tie Check Sept. 10, 1969  
D. Powell  
H. Larson

Tie Check July 18, 1966  
B. Rogers  
D. Powell  
J. Berry

Tie check - June 22, 1978  
D. Dahl, B. Stephens, M. Krow

TEMPERATURE CORRECTED  
AND HORIZONTALLY  
TAPED MEASUREMENTS

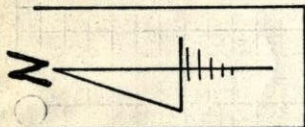
ROLAND W. ANDERSON  
COUNTY SURVEYOR  
ANOKA COUNTY, MINNESOTA



Center Sec. 5-T32-R23

1/2" pinched iron pipe over top center of Granite Monument  
 Set C.I. Mon. over top of Granite down 1.2±. PK's 2.00 N+E.

Northbound  
 HIGHWAY #65



Southbound

Service Drive

Spike + washer ✓

9/10/69  
 #9-68°  
 D. Powell  
 H. Larson

Business Road

SE Corner of Foundation of Telephone Booth

Nail + washer Power Pole  
 3" Capped Minn. Highway Department Right of Way Marker

1 Story Concrete Block Garage  
 Corner of Concrete Blocks Brick Facing

Tie Check  
 July 18, 1966  
 B. Rogers  
 D. Powell  
 J. Berry

TEMPERATURE CORRECTED AND HORIZONTALLY TAPED MEASUREMENTS

ROLAND W. ANDERSON  
 COUNTY SURVEYOR  
 ANOKA COUNTY, MINNESOTA

Center Sec. 5-32-23

1/2" Iron pipe over top center pinched granite Monument



Spike & washer

April 15, 1963  
 J. Oliver  
 M.D. Anderson

Booth was moved

SE. Cor. found. of telephone booth  
 1-5 Conc. block Garage  
 Cor. of Conc. blocks  
 3" Capped M.H.D.-R.O.W. marker

P.P. nail & washer  
 temp. 85  
 tape #5

TEMPERATURE CORRECTED AND HORIZONTALLY TAPED MEASUREMENTS

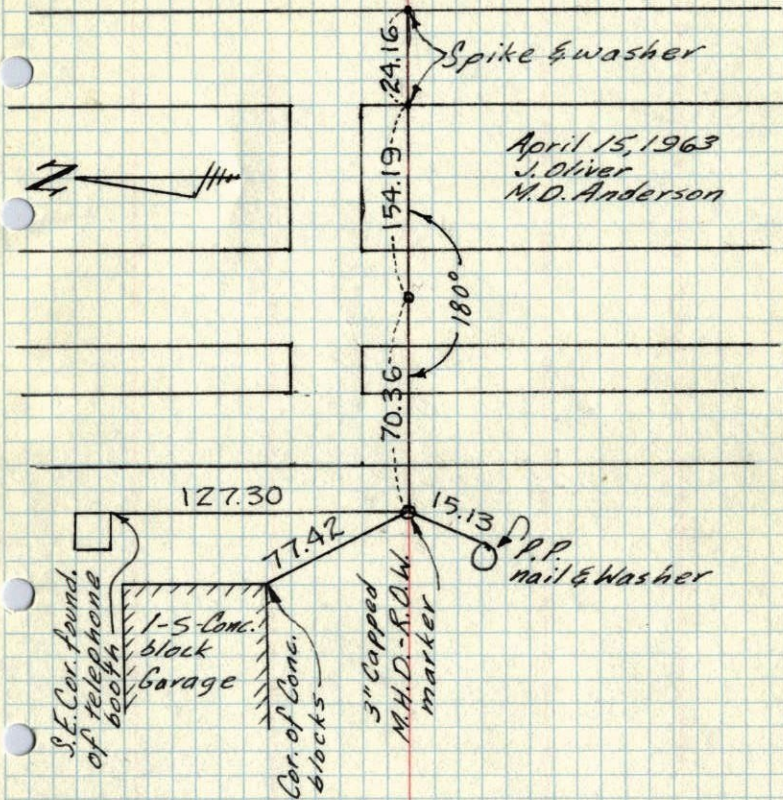
Ties checked  
 7/18/66  
 B. Rogers  
 D. Powell  
 J. Berry

ROLAND W. ANDERSON  
 COUNTY SURVEYOR  
 ANOKA COUNTY, MINNESOTA



# Center Sec. 5-32-23

1/2" Iron pipe over top center  
Granite Monument

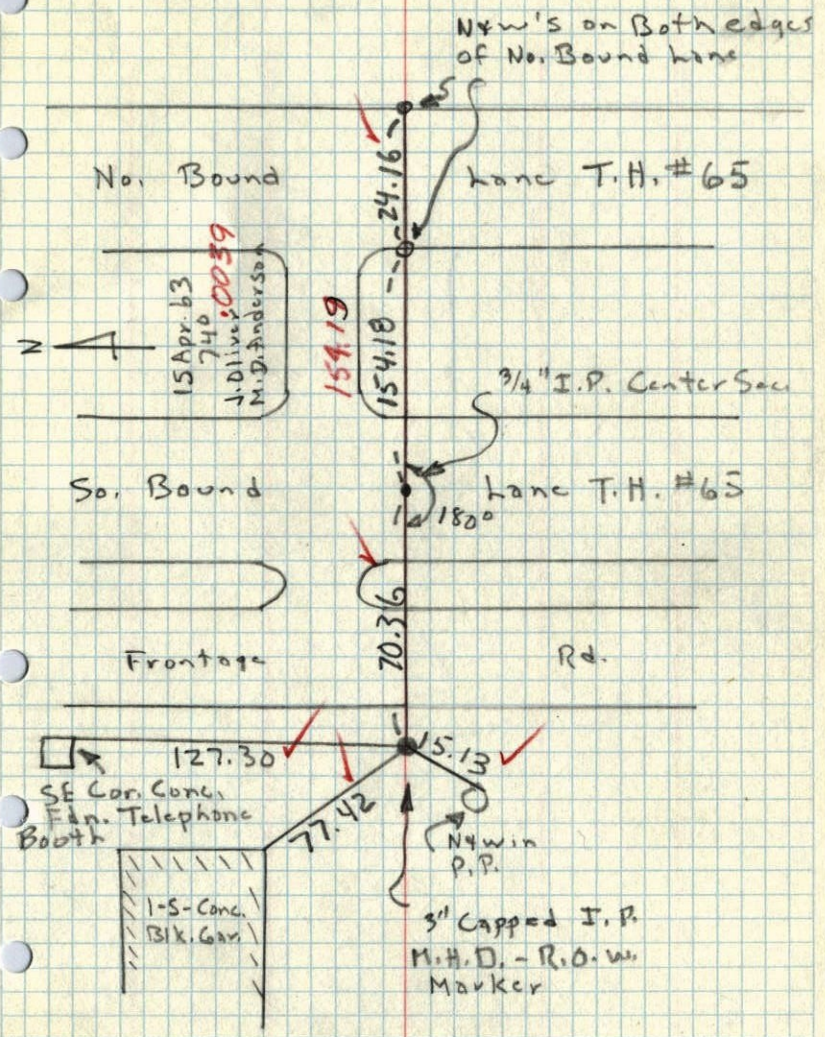


TEMPERATURE CORRECTED  
AND HORIZONTALLY  
TAPED MEASUREMENTS

ROLAND W. ANDERSON  
COUNTY SURVEYOR  
ANOKA COUNTY, MINNESOTA

# Center Sec. 5, T32, R23

3/4" I.P. over Granite Mon.

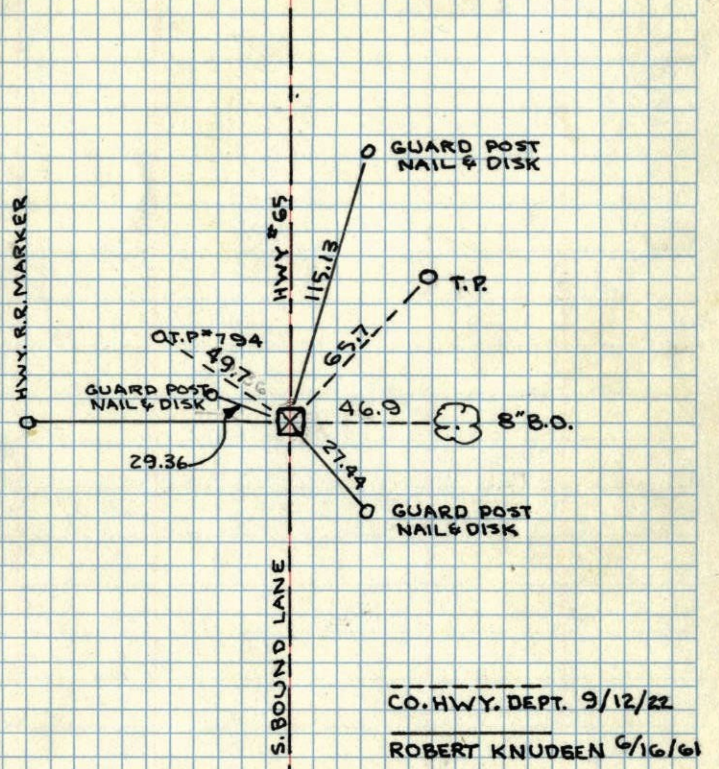


ROLAND W. ANDERSON  
COUNTY SURVEYOR  
ANOKA COUNTY, MINNESOTA



# CENTER OF SEC. 5-32-23

GRANITE MONUMENT DOWN 1'  
IRON MONUMENT OVER



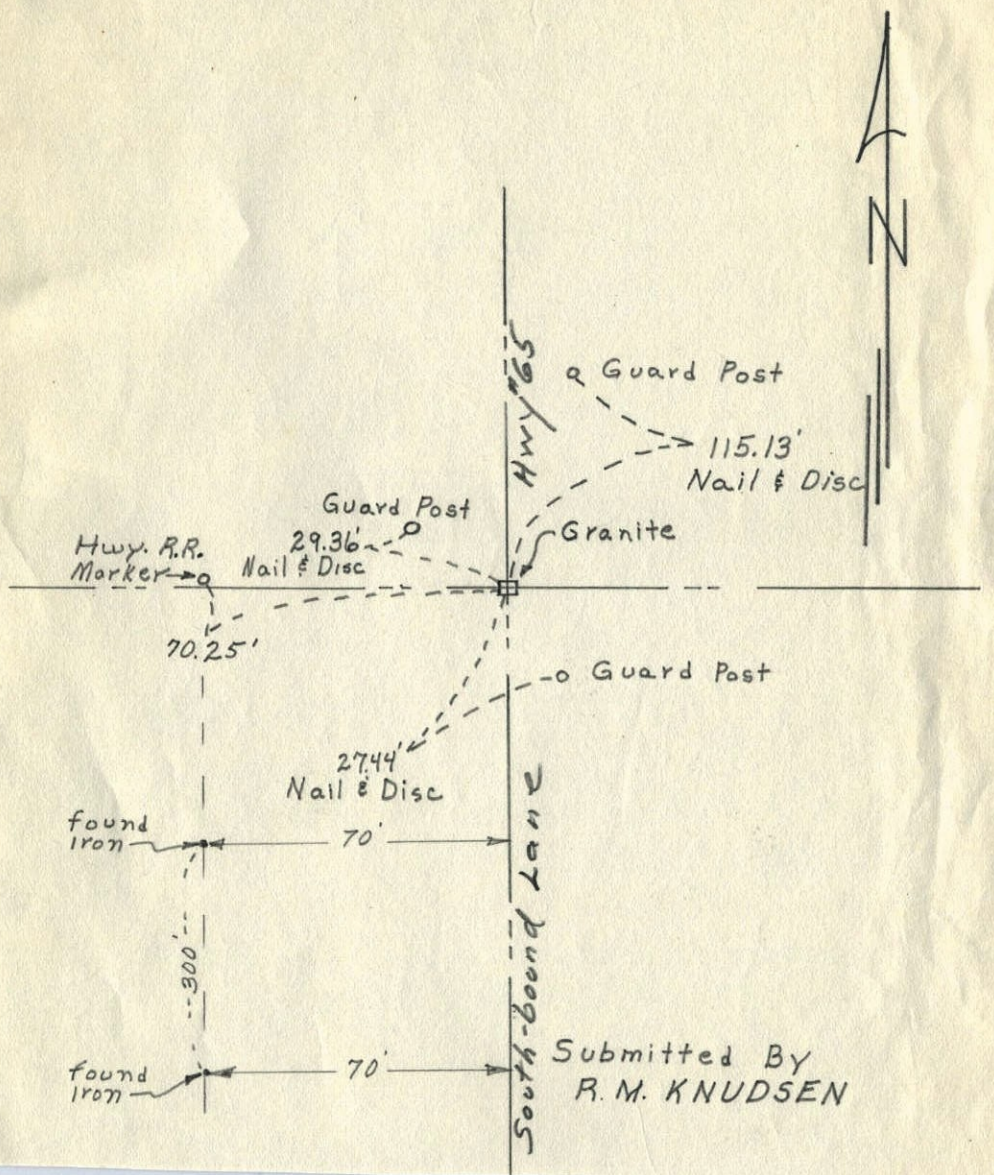
CO. HWY. DEPT. 9/12/22  
ROBERT KNUDSEN 6/16/61

This Granite is less than 0.10 South of line between Granites at E 1/4 Corn & West 1/4 Corn. and 1.52 East of line between Granites at N 1/4 Corn. & S 1/4 Corn. State law says monuments govern if reasonable. This Center Granite has been used too long to disregard. R.W.A.

June 16, 1961

# Center of Sec. 5-T.32-R.23

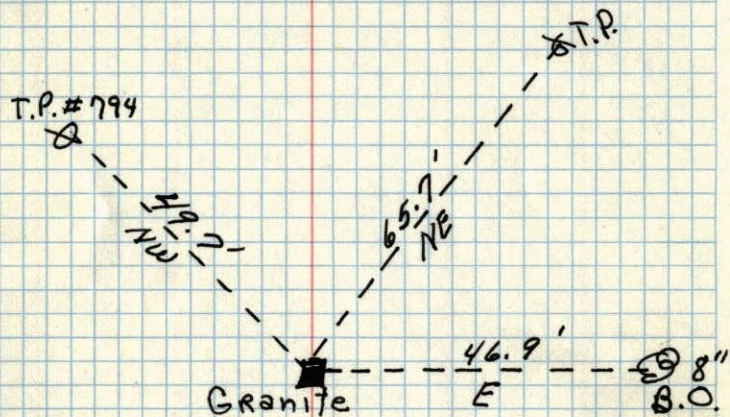
Granite down 1'  
(Iron over granite)



Submitted By  
R. M. KNUDSEN

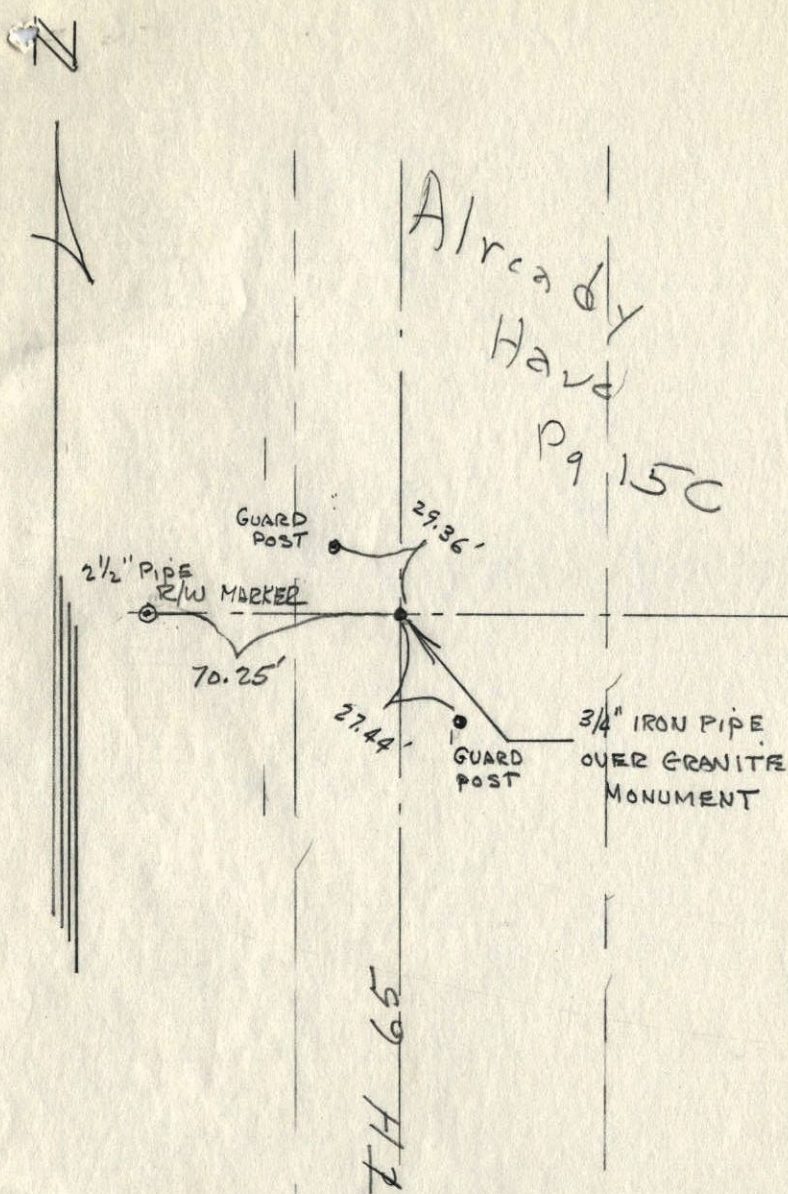


Center of Sec. 5 ~~Ham~~ Lake twp. 5 ✓



OK 9-19-22  
Anoka Co. Hwy. Dept.

CENTER TIE  
SECTION 5-32-23



Already  
Have  
Pg 15C